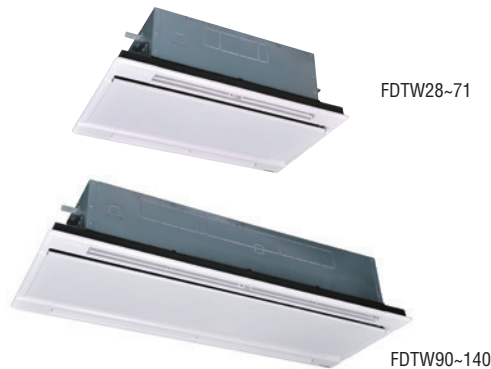


# Ceiling Cassette -2way- FDTW

## Model No.

FDTW28KXE6F	FDTW90KXE6F
FDTW45KXE6F	FDTW112KXE6F
FDTW56KXE6F	FDTW140KXE6F
FDTW71KXE6F	



## Remote control (option)

Wired



RC-EX3A RC-E5 RCH-E3

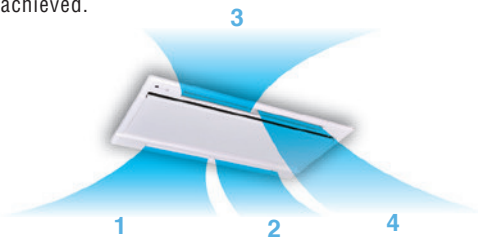
Wireless



RCN-TW-E2

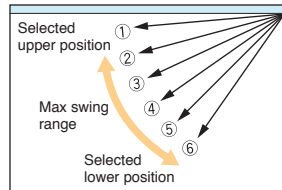
## Individual flap control system

According to room temperature conditions, four directions air flow can be controlled individually by flap control system. Due to optimization of outlet design of air flow our new advanced technology, sufficient air flow is secured and long reach of air flow is achieved.



The flap can swing within the range of upper and lower flap position selected with wired remote control.

\*The wireless remote control is not applicable to the individual flap control system.



## 750mm Drain Pump

Drain can be discharged upward by 750mm from the ceiling surface close to the indoor unit. It allows a piping layout with a high degree of freedom depending on the installation location.

## Installation workability

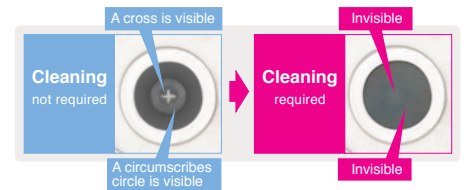
### Drainage spout

Drainage flow test can be done easily by use of this drainage spout.



### Transparent access hole to drain pan

Condition of the bottom of a drain pan can be checked through this transparent access hole without removing drain pan.



## Motion Sensor

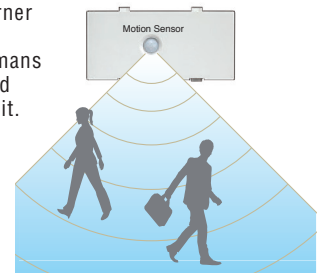
**NEW**

(Option)

Motion sensor is equipped in the corner of the panel and detects the presence/absence and activity of humans in a room to improve the comfort and energy saving performance of the unit.



LB-TW-6W



# Specifications

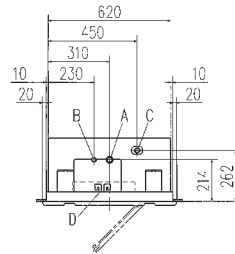
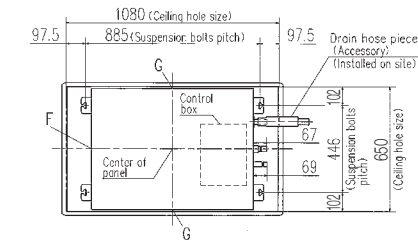
Item	Model	FDTW28KXE6F	FDTW45KXE6F	FDTW56KXE6F	FDTW71KXE6F	FDTW90KXE6F	FDTW112KXE6F	FDTW140KXE6F	
Nominal cooling capacity	kW	2.8	4.5	5.6	7.1	9.0	11.2	14.0	
Nominal heating capacity	kW	3.2	5.0	6.3	8.0	10.0	12.5	16.0	
Power source		1 Phase 220-240V, 50Hz							
Power consumption	Cooling	0.09-0.09	0.10-0.10	0.14-0.14	0.14-0.14	0.19-0.19	0.19-0.19	0.19-0.19	
	Heating	0.09-0.09	0.10-0.10	0.14-0.14	0.14-0.14	0.19-0.19	0.19-0.19	0.19-0.19	
Sound power level	dB(A)	58					65	—	
Sound pressure level	dB(A)	P-Hi:42 Hi:38 Me:34 Lo:31				P-Hi:48 Hi:45 Me:41 Lo:37			
Exterior dimensions H x W x D	mm	Unit:325x820x620 Panel:20x1120x680				Unit:325x1535x620 Panel:20x1835x680			
Net weight	kg	Unit:20 Panel:8.5	Unit:21 Panel:8.5	Unit:23 Panel:8.5	Unit:35 Panel:13				
Air flow	m <sup>3</sup> /min	P-Hi:14.5 Hi:12 Me:10 Lo:9				P-Hi:31 Hi:27 Me:23 Lo:20			
Outside air intake		Possible							
Panel		TW-PSA-26W-E				TW-PSA-46W-E			
Air filter, Q'ty		Pocket Plastic net x2 (Washable)				Pocket Plastic net x3 (Washable)			
Remote control(option)		wired:RC-EX3A, RC-E5, RCH-E3 wireless:RCN-TW-E2							
Installation data		Liquid line:ø6.35(1/4") Gas line:ø9.52(3/8")		Liquid line:ø6.35(1/4") Gas line:ø12.7(1/2")		Liquid line:ø9.52(3/8") Gas line:ø15.88(5/8")			

1. The data are measured under the following conditions(ISO-T1). Cooling: Indoor temp. of 27°CDB, 19°CWB, and outdoor temp. of 35°CDB. Heating: Indoor temp. of 20°CDB, and outdoor temp. of 7°CDB, 6°CWB.  
2. Sound pressure level indicates the value in an anechoic chamber. During operation these values are somewhat higher due to ambient conditions.

# Dimensions

All measurements in mm.

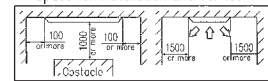
## FDTW28KXE6F, 45KXE6F, 56KXE6F, 71KXE6F



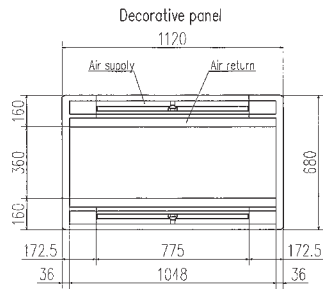
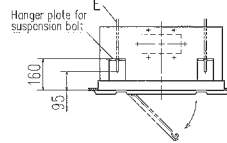
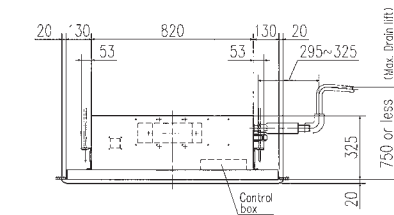
Symbol	Model	28	45, 56	71
A	Gas piping	φ9.52 (3/8") (Flare)	φ12.11 (1/2") (Flare)	φ13.88 (1/2") (Flare)
B	Liquid piping	φ6.35 (1/4") (Flare)	φ9.52 (3/8") (Flare)	φ9.52 (3/8") (Flare)
C	Drain piping	VP25 (O.D. 32)		
D	Hole for wiring			
E	Suspension bolts	(M10)		
F	Outside air opening for ducting	(Knock out)		
G	Air outlet opening for ducting	(Knock out)		

Notes (1) The model name label is attached on the lid of the control box.

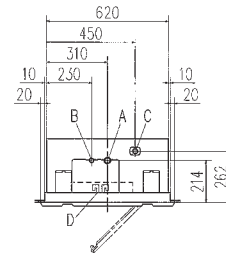
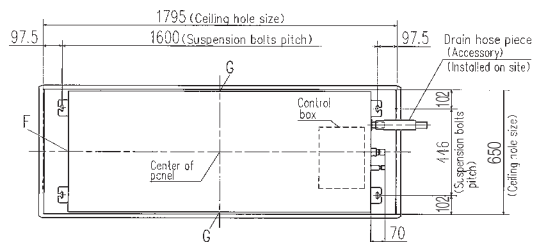
### Space for installation and service



Make a space of 4000 or more between the units when installing more than one.



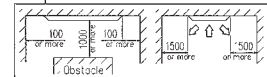
## FDTW90KXE6F, 112KXE6F, 140KXE6F



Symbol	Content
A	Gas piping
B	Liquid piping
C	Drain piping
D	Hole for wiring
E	Suspension bolts
F	Outside air opening for ducting
G	Air outlet opening for ducting

Notes (1) The model name label is attached on the lid of the control box.

### Space for installation and service



Make a space of 5000 or more between the units when installing more than one.

