



KXZ Heat pump systems

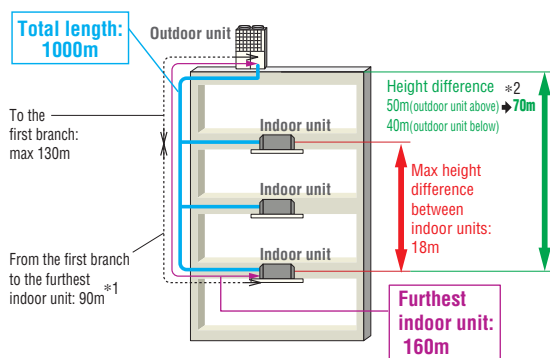
10, 12HP (28.0kW, 33.5kW)

Model No.	Nominal Cooling Capacity
FDC280KXZE1	28.0kW
FDC335KXZE1	33.5kW

- Connect up to 29 indoor units/up to 130% capacity.
- High efficiency with COP (in cooling) up to 3.9.
- These units employ DC inverter multiport compressors with concentrated winding motor.
- Industry leading total piping length up to 1000m and a maximum pipe run of 160m.

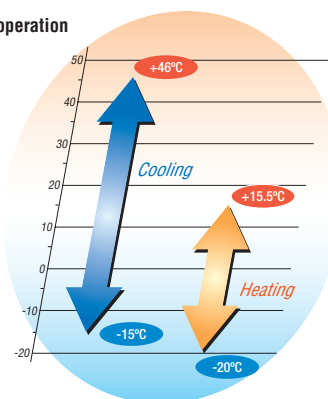


Uniform footprint of models (10,12HP) allows continuous side-by-side installation



- *1 The difference between the longest and the shortest indoor unit piping from the first branch must be within 40m. (MAX85m)
 *2 In case of height difference up to 70m, please contact your dealer. Height difference up to 90m is possible with High Head series. Please refer to page 56.

Range of operation



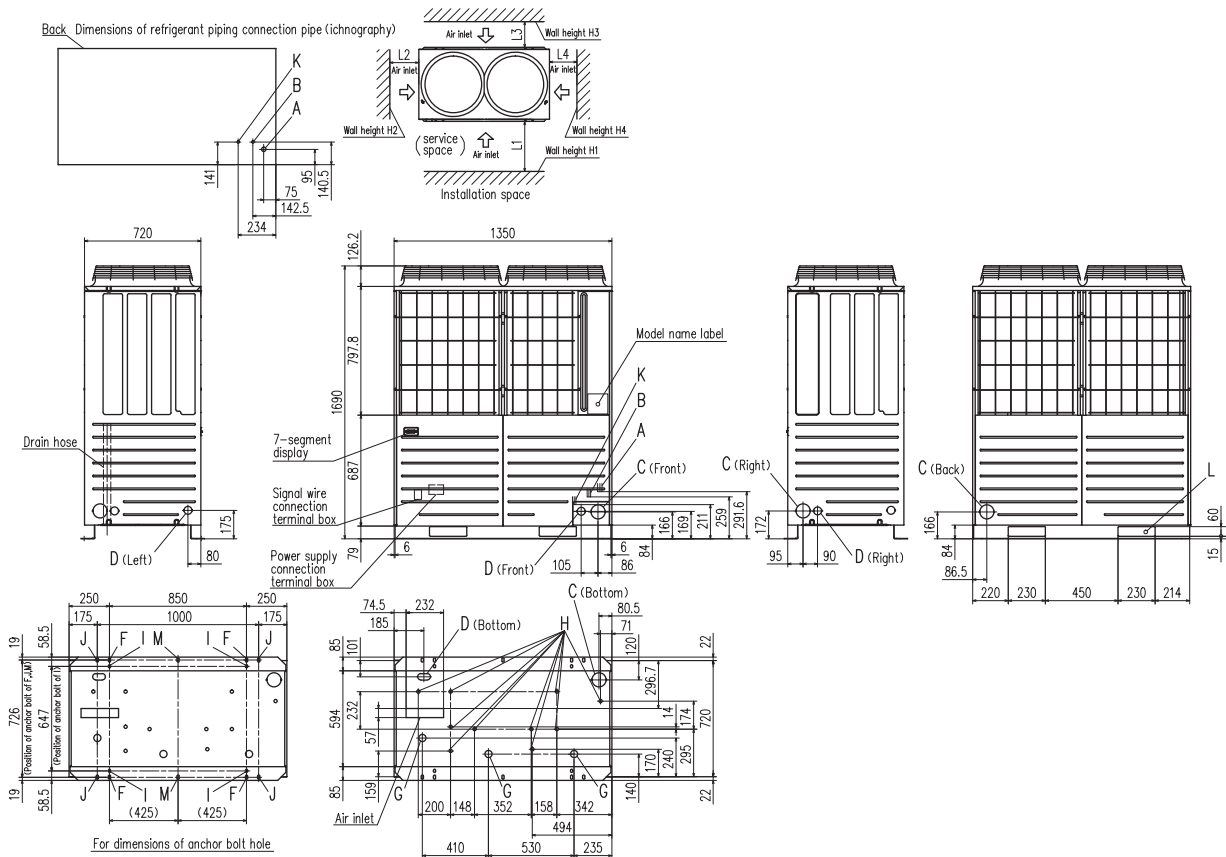
Specifications

Item		Model	FDC280KXZE1	FDC335KXZE1
Nominal horse power			10HP	12HP
Power source			3 Phase 380-415V, 50Hz	
Starting current		A	5	
Max current		A	21.2	
Nominal capacity	Cooling	kW	28.0	33.5
	Heating		31.5	37.5
Electrical characteristics	Power consumption	Cooling	7.24	8.96
		Heating	7.28	9.04
Exterior dimensions		HxWxD	1690x1350x720	
Net weight		kg	272	
Sound pressure level		Cooling/Heating	55/57	61/58
Refrigerant	Type / GWP		R410A / 2088	
	Charge	kg/TCO ₂ Eq	11.0 / 22.968	
Refrigerant piping size	Liquid line	mm(in)	ø9.52(3/8")	ø12.7(1/2")
	Gas line	mm(in)	ø22.22(7/8")	ø25.4(1") [ø22.22(7/8")]
Capacity connection		%	50~130	
Number of connectable indoor units			24	29

1. The data are measured under the following conditions(ISO-T1). Cooling: Indoor temp. of 27°CDB, 19°CWB, and outdoor temp. of 35°CDB. Heating: Indoor temp. of 20°CDB, and outdoor temp. of 7°CDB, 6°CWB. Piping length is 7.5m.
 2. Sound pressure level indicates the value in an anechoic chamber. During operation these values are somewhat higher due to ambient conditions.
 3. 'tonne(s) of CO₂ equivalent' means a quantity of greenhouse gases- expressed as the product of the weight of the greenhouse gases in metric tonnes and of their global warming potential.
 4. [] : Pipe sizes applicable to European installations are shown in parentheses.

Dimensions

All measurements in mm.

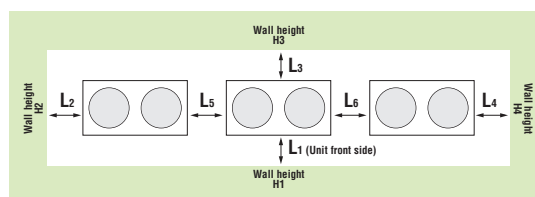


Mark	Content	280	335
A	Refrigerant gas piping connection pipe	ø22.22(Brazing)	ø25.4(Brazing)
B	Refrigerant liquid piping connection pipe	ø9.52(Flare)	ø12.7(Flare)
C	Refrigerant piping exit hole	ø88(or ø100)	
D	Power supply entry hole	ø50 (right · left · front), long hole 40 x 80 (bottom)	
F	Anchor bolt hole	M10 x 4 places	
G	Drain waste water hose hole	ø45 x 3 places	
H	Drain hole	ø20 x 10 places	
K	Refrigerant oil equalization piping connection pipe	ø9.52(Flare)	
L	Carrying in or hole for hanging	230 x 60	

Installation example		
Dimensions	1	2
L ₁	500	Open
L ₂	10(30)	10(30)
L ₃	100	100
L ₄	10(30)	Open
H ₁	1500	Open
H ₂	No limit	No limit
H ₃	1000	No limit
H ₄	No limit	Open

() :In case it is the promised installation location that the outdoor unit is used on conditions with the ambient temperature of 43°C or more.

When more than one unit is installed



Installation example		
Dimensions	1	2
L ₁	500	Open
L ₂	10(30)	200
L ₃	100	300
L ₄	10(30)	Open
L ₅	10(30)	400
L ₆	10(30)	400
H ₁	1500	Open
H ₂	No limit	No limit
H ₃	1000	No limit
H ₄	No limit	Open

() :In case it is the promised installation location that the outdoor unit is used on conditions with the ambient temperature of 43°C or more.



KXZ Heat pump systems

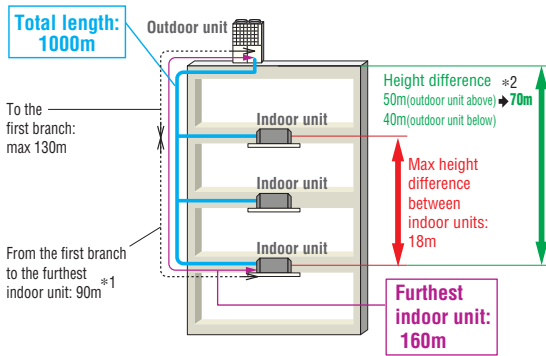
14, 16, 17, 18, 20HP (40.0kW~56.0kW)

Model No.	Nominal Cooling Capacity
FDC400KXZE1	40.0kW
FDC450KXZE1	45.0kW
FDC475KXZE1	47.5kW
FDC500KXZE1	50.0kW
FDC560KXZE1	56.0kW

- Connect up to 48 indoor units/up to 130% capacity.
- High efficiency with COP (in cooling) up to 3.6.
- These units employ DC inverter multiport compressors with concentrated winding motor.
- Industry leading total piping length up to 1000m and a maximum pipe run of 160m.

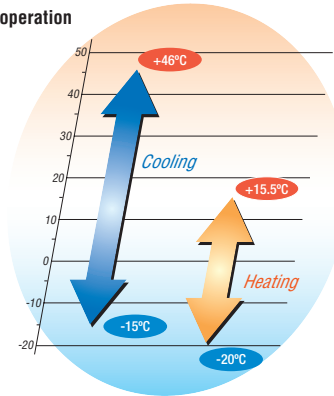


Uniform footprint of all models (from 14HP~20HP) allows continuous side-by-side installation



- *1 The difference between the longest and the shortest indoor unit piping from the first branch must be within 40m. (MAX85m)
 *2 In case of height difference up to 70m, please contact your dealer. Height difference up to 90m is possible with High Head series. Please refer to page 56.

Range of operation



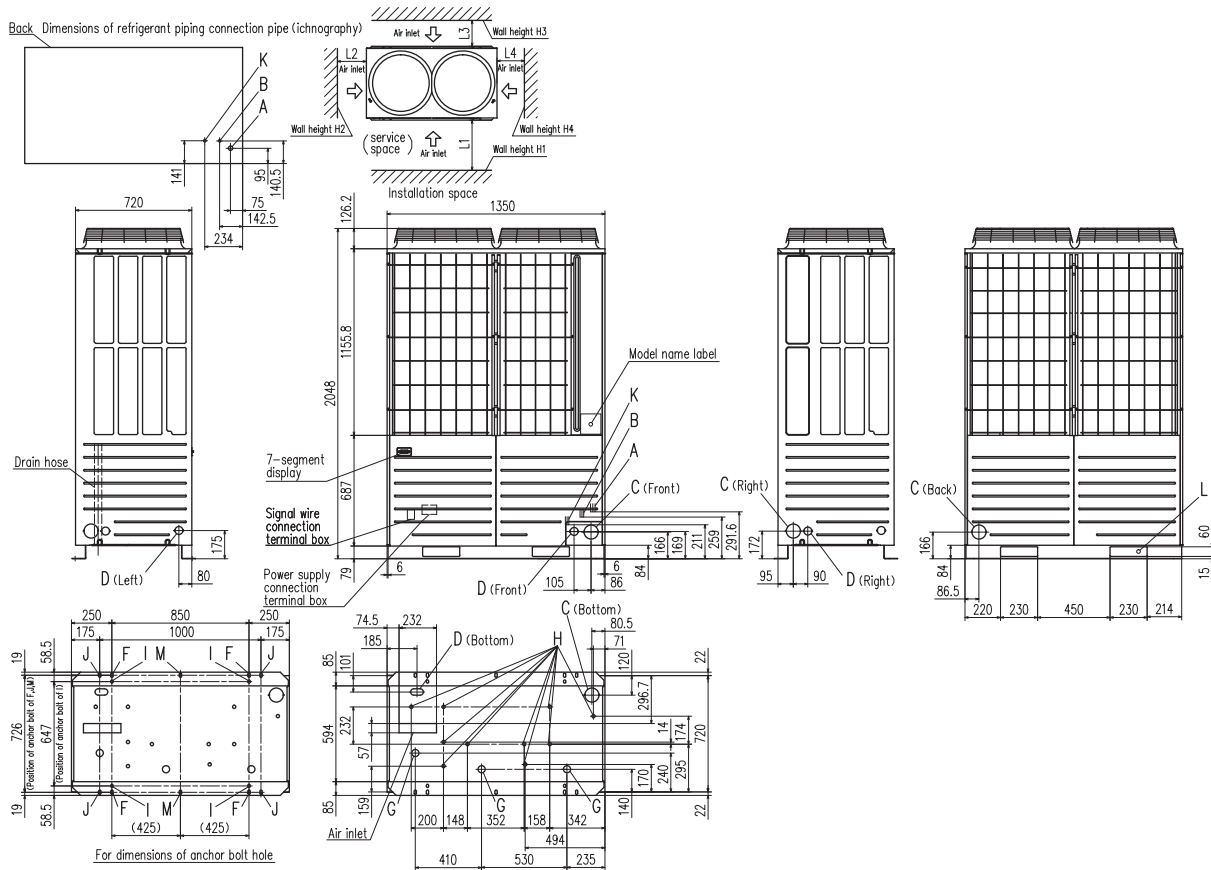
Specifications

Item		Model	FDC400KXZE1	FDC450KXZE1	FDC475KXZE1	FDC500KXZE1	FDC560KXZE1	
Nominal horse power			14HP	16HP	17HP	18HP	20HP	
Power source			3 Phase 380-415V, 50Hz					
Starting current		A	5			8		
Max current		A	32			42.4		
Nominal capacity	Cooling	kW	40.0	45.0	47.5	50.0	56.0	
	Heating	kW	45.0	50.0	53.0	56.0	63.0	
Electrical characteristics	Power consumption	kW	Cooling	10.96	13.98	13.98	13.97	16.62
	Heating		10.69	12.50	13.00	13.49	15.95	
Exterior dimensions		HxWxD	mm 2048x1350x720					
Net weight		kg	317			370		
Sound pressure level		Cooling/Heating	dB(A)	60/62	61/62	61/61	61/62	64/66
Refrigerant	Type / GWP	R410A / 2088						
	Charge	kg/TCO ₂ Eq	11.5 / 24.012					
Refrigerant piping size	Liquid line	mm(in)	ø12.7(1/2")					
	Gas line		ø25.4(1") [ø28.58(1 1/8")]					
Capacity connection		%	50~130					
Number of connectable indoor units			34	39	41	43	48	

1. The data are measured under the following conditions (ISO-T1). Cooling: Indoor temp. of 27°CDB, 19°CWB, and outdoor temp. of 35°CDB. Heating: Indoor temp. of 20°CDB, and outdoor temp. of 7°CDB, 6°CWB. Piping length is 7.5m.
 2. Sound pressure level indicates the value in an anechoic chamber. During operation these values are somewhat higher due to ambient conditions.
 3. "tonne(s) of CO₂ equivalent" means a quantity of greenhouse gases- expressed as the product of the weight of the greenhouse gases in metric tonnes and of their global warming potential.
 4. [] : Pipe sizes applicable to European installations are shown in parentheses.

Dimensions

All measurements in mm.

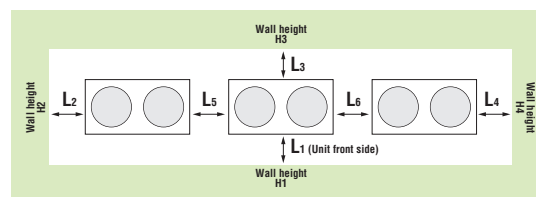


Mark	Content	400	450, 475, 500, 560
A	Refrigerant gas piping connection pipe	ø25.4(Brazing)	ø28.58(Brazing)
B	Refrigerant liquid piping connection pipe	ø12.7(Flare)	
C	Refrigerant piping exit hole	ø88(or ø100)	
D	Power supply entry hole	ø50 (right · left · front), long hole 40 x 80 (bottom)	
F	Anchor bolt hole	M10 x 4 places	
G	Drain waste water hose hole	ø45 x 3 places	
H	Drain hole	ø20 x 10 places	
K	Refrigerant oil equalization piping connection pipe	ø9.52(Flare)	
L	Carrying in or hole for hanging	230 x 60	

Installation example		
Dimensions	1	2
L ₁	500	Open
L ₂	10(30)	10(30)
L ₃	100	100
L ₄	10(30)	Open
H ₁	1500	Open
H ₂	No limit	No limit
H ₃	1000	No limit
H ₄	No limit	Open

(): In case it is the promised installation location that the outdoor unit is used on conditions with the ambient temperature of 43°C or more.

When more than one unit is installed



Installation example		
Dimensions	1	2
L ₁	500	Open
L ₂	10(30)	200
L ₃	100	300
L ₄	10(30)	Open
L ₅	10(30)	400
L ₆	10(30)	400
H ₁	1500	Open
H ₂	No limit	No limit
H ₃	1000	No limit
H ₄	No limit	Open

(): In case it is the promised installation location that the outdoor unit is used on conditions with the ambient temperature of 43°C or more.



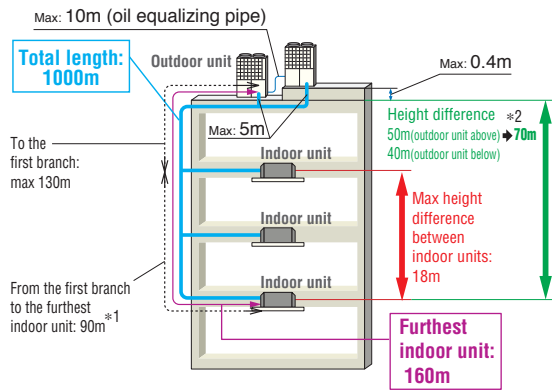
KXZ Heat pump combination systems

22, 24HP (61.5kW, 67.0kW)



Model No.	Nominal Cooling Capacity
FDC615KXZE1 (FDC280+FDC335)	61.5kW
FDC670KXZE1 (FDC335+FDC335)	67.0kW

- Connect up to 58 indoor units/up to 130% capacity.
- High efficiency with COP (in cooling) up to 3.8.
- These units employ DC inverter multiport compressors with concentrated winding motor.
- Industry leading total piping length up to 1000m and a maximum pipe run of 160m.

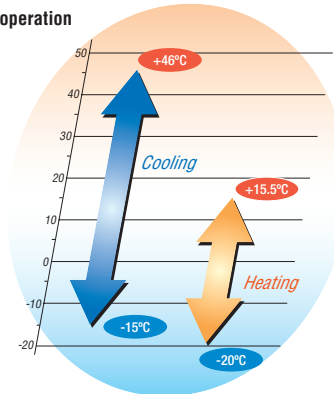


*1 The difference between the longest and the shortest indoor unit piping from the first branch must be within 40m. (MAX85m)
 *2 In case of height difference up to 70m, please contact your dealer. Height difference up to 90m is possible with High Head series. Please refer to page 56.



Uniform footprint of all models (from 22HP, 24HP) allows continuous side-by-side installation

Range of operation



Specifications

Exterior dimension : Please refer to page37.

Item		Model	FDC615KXZE1	FDC670KXZE1
Combination (FDC)			280KXZE1 335KXZE1	335KXZE1 335KXZE1
Nominal horse power			22HP	24HP
Power source			3 Phase 380-415V, 50Hz	
Starting current		A	10	
Max current		A	42.4	
Nominal capacity	Cooling	kW	61.5	67.0
	Heating	kW	69.0	75.0
Electrical characteristics	Power consumption	Cooling	16.20	17.92
		Heating	16.32	18.08
Exterior dimensions		HxWxD	1690x2700x720	
Net weight		kg	544	
Refrigerant charge		R410A	11.0x2	
Refrigerant piping size	Liquid line	mm(in)	ø12.7(1/2")	
	Gas line	mm(in)	ø28.58(1 1/8")	
Capacity connection		%	50~130	
Number of connectable indoor units			53	58

1. The data are measured under the following conditions(ISO-T1). Cooling: Indoor temp. of 27°CDB, 19°CWB, and outdoor temp. of 35°CDB. Heating: Indoor temp. of 20°CDB, and outdoor temp. of 7°CDB, 6°CWB. Piping length is 7.5m.
 2. Sound pressure level indicates the value in anechoic chamber. During operation these values are somewhat higher due to ambient conditions.

KXZ Heat pump combination systems

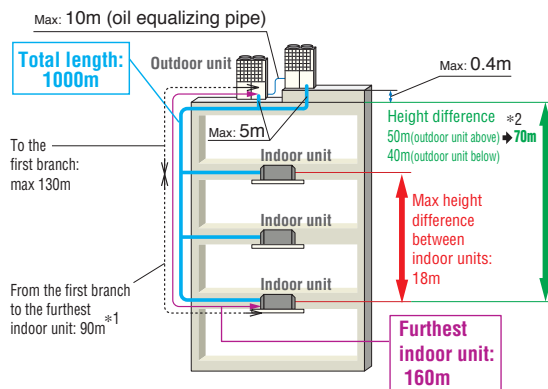
26, 28, 30, 32, 34, 36, 38, 40HP (73.5kW~112.0kW)

Model No.	Nominal Cooling Capacity
FDC735KXZE1 (FDC335+FDC400)	73.5kW
FDC800KXZE1 (FDC400+FDC400)	80.0kW
FDC850KXZE1 (FDC400+FDC450)	85.0kW
FDC900KXZE1 (FDC450+FDC450)	90.0kW
FDC950KXZE1 (FDC475+FDC475)	95.0kW
FDC1000KXZE1 (FDC500+FDC500)	100.0kW
FDC1060KXZE1 (FDC500+FDC560)	106.0kW
FDC1120KXZE1 (FDC560+FDC560)	112.0kW

- Connect up to 80 indoor units/up to 130% capacity.
- High efficiency with COP (in cooling) up to 3.7.
- These units employ DC inverter multiport compressors with concentrated winding motor.
- Industry leading total piping length up to 1000m and a maximum pipe run of 160m.

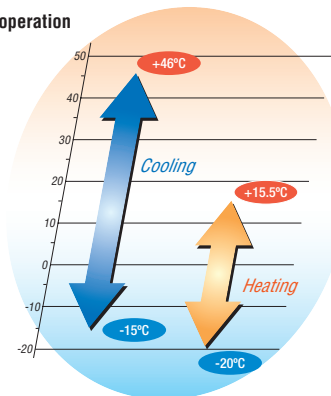


• In case of 26HP



- *1 The difference between the longest and the shortest indoor unit piping from the first branch must be within 40m. (MAX85m)
- *2 In case of height difference up to 70m, please contact your dealer. Height difference up to 90m is possible with High Head series. Please refer to page 56.

Range of operation



Specifications

Exterior dimension : Please refer to page37,39.

Item	Model	FDC735KXZE1	FDC800KXZE1	FDC850KXZE1	FDC900KXZE1	FDC950KXZE1	FDC1000KXZE1	FDC1060KXZE1	FDC1120KXZE1	
Combination (FDC)		335KXZE1	400KXZE1	400KXZE1	450KXZE1	475KXZE1	500KXZE1	500KXZE1	560KXZE1	
		400KXZE1	400KXZE1	450KXZE1	450KXZE1	475KXZE1	500KXZE1	560KXZE1	560KXZE1	
Nominal horse power		26HP	28HP	30HP	32HP	34HP	36HP	38HP	40HP	
Power source		3 Phase 380-415V, 50Hz								
Starting current	A	10					16			
Max current	A	53.2	64			84.8				
Nominal capacity	Cooling	kW								
	Heating	73.5	80.0	85.0	90.0	95.0	100.0	106.0	112.0	
Electrical characteristics	Power consumption	Cooling	kW							
		Heating	19.92	21.38	23.19	25.00	26.00	26.98	29.44	31.90
Exterior dimensions	HxWxD	mm								
Net weight	kg	589	634			740				
Refrigerant charge	R410A	kg		11.5x2						
Refrigerant piping size	Liquid line	mm(in)							mm(in)	
	Gas line	ø15.88(5/8)							ø19.05(3/4)	
Capacity connection	%	ø31.75(1 1/4) [ø34.92(1 3/8)]							ø38.1(1 1/2) [ø34.92(1 3/8)]	
Number of connectable indoor units		50~130					80			

1. The data are measured under the following conditions (ISO-T1). Cooling: Indoor temp. of 27°CDB, 19°CWB, and outdoor temp. of 35°CDB. Heating: Indoor temp. of 20°CDB, and outdoor temp. of 7°CDB, 6°CWB. Piping length is 7.5m.
 2. Sound pressure level indicates the value in an anechoic chamber. During operation these values are somewhat higher due to ambient conditions.
 3. [] : Pipe sizes applicable to European installations are shown in parentheses.



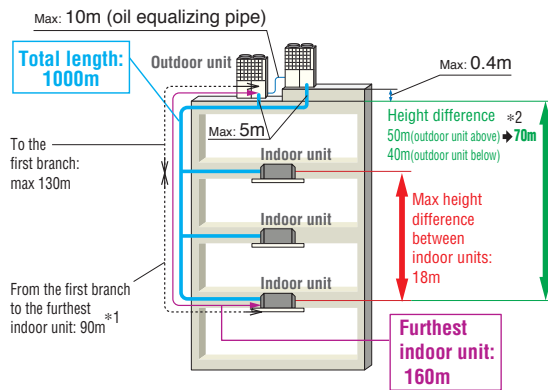
KXZ Heat pump combination systems

42, 44, 46, 48HP (120.0kW~135.0kW)

Model No.	Nominal Cooling Capacity
FDC1200KXZE1 (FDC400+FDC400+FDC400)	120.0kW
FDC1250KXZE1 (FDC400+FDC400+FDC450)	125.0kW
FDC1300KXZE1 (FDC400+FDC450+FDC450)	130.0kW
FDC1350KXZE1 (FDC450+FDC450+FDC450)	135.0kW

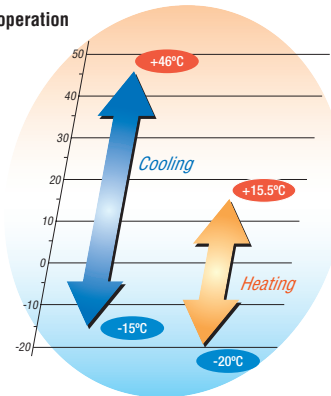


- Connect up to 80 indoor units/up to 130% capacity.
- High efficiency with COP (in cooling) up to 3.6.
- These units employ DC inverter multiport compressors with concentrated winding motor.
- Industry leading total piping length up to 1000m and a maximum pipe run of 160m.



*1 The difference between the longest and the shortest indoor unit piping from the first branch must be within 40m. (MAX85m)
 *2 In case of height difference up to 70m, please contact your dealer. Height difference up to 90m is possible with High Head series. Please refer to page 56.

Range of operation



Specifications

Exterior dimension : Please refer to page39.

Item	Model	Model				
		FDC1200KXZE1	FDC1250KXZE1	FDC1300KXZE1	FDC1350KXZE1	
Combination (FDC)		400KXZE1	400KXZE1	400KXZE1	450KXZE1	
		400KXZE1	400KXZE1	450KXZE1	450KXZE1	
		400KXZE1	450KXZE1	450KXZE1	450KXZE1	
Nominal horse power		42HP	44HP	46HP	48HP	
Power source		3 Phase 380-415V, 50Hz				
Starting current	A	15				
Max current	A	96				
Nominal capacity	Cooling	kW				
	Heating	kW				
Electrical characteristics	Power consumption	Cooling	kW			
		Heating	kW			
Exterior dimensions	HxWxD	mm				
Net weight		kg				
Refrigerant charge	R410A	kg				
Refrigerant piping size	Liquid line	mm(in)				
	Gas line	mm(in)				
Capacity connection		%				
Number of connectable indoor units						

1. The data are measured under the following conditions (ISO-T1). Cooling: Indoor temp. of 27°CDB, 19°CWB, and outdoor temp. of 35°CDB. Heating: Indoor temp. of 20°CDB, and outdoor temp. of 7°CDB, 6°CWB. Piping length is 7.5m.
 2. Sound pressure level indicates the value in an anechoic chamber. During operation these values are somewhat higher due to ambient conditions.
 3. [] : Pipe sizes applicable to European installations are shown in parentheses.

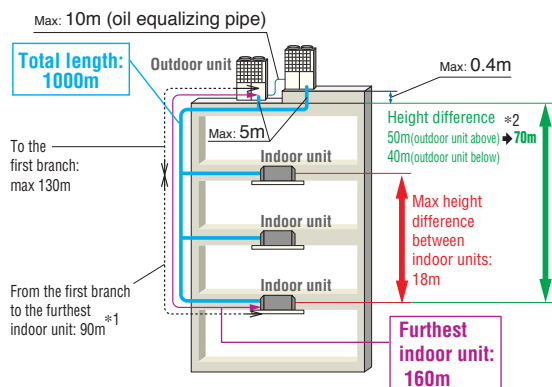
KXZ Heat pump combination systems

50, 52, 54, 56, 58, 60HP (142.5kW~168.0kW)



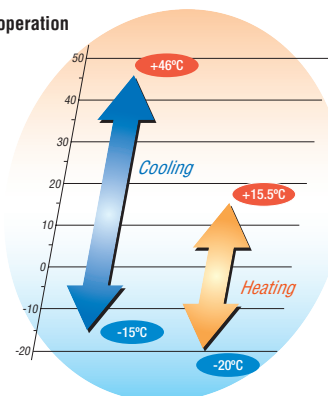
Model No.	Nominal Cooling Capacity
FDC1425KXZE1 (FDC475+FDC475+FDC475)	142.5kW
FDC1450KXZE1 (FDC475+FDC475+FDC500)	145.0kW
FDC1500KXZE1 (FDC500+FDC500+FDC500)	150.0kW
FDC1560KXZE1 (FDC500+FDC500+FDC560)	156.0kW
FDC1620KXZE1 (FDC500+FDC560+FDC560)	162.0kW
FDC1680KXZE1 (FDC560+FDC560+FDC560)	168.0kW

- Connect up to 80 indoor units/up to 130% capacity.
- High efficiency with COP (in cooling) up to 3.6.
- These units employ DC inverter multiport compressors with concentrated winding motor.
- Industry leading total piping length up to 1000m and a maximum pipe run of 160m.



*1 The difference between the longest and the shortest indoor unit piping from the first branch must be within 40m. (MAX85m)
 *2 In case of height difference up to 70m, please contact your dealer. Height difference up to 90m is possible with High Head series. Please refer to page 56.

Range of operation



Specifications

Exterior dimension : Please refer to page39.

Item	Model	FDC1425KXZE1	FDC1450KXZE1	FDC1500KXZE1	FDC1560KXZE1	FDC1620KXZE1	FDC1680KXZE1	
		Combination (FDC)	475KXZE1	475KXZE1	500KXZE1	500KXZE1	500KXZE1	560KXZE1
		475KXZE1	475KXZE1	500KXZE1	500KXZE1	560KXZE1	560KXZE1	
		475KXZE1	500KXZE1	500KXZE1	560KXZE1	560KXZE1	560KXZE1	
Nominal horse power		50HP	52HP	54HP	56HP	58HP	60HP	
Power source		3 Phase 380-415V, 50Hz						
Starting current	A	24						
Max current	A	127.2						
Nominal capacity	Cooling	kW						
	Heating	kW						
Electrical characteristics	Power consumption	Cooling	kW					
		Heating	kW					
Exterior dimensions	HxWxD	mm						
Net weight		kg						
Refrigerant charge	R410A	kg						
Refrigerant piping size	Liquid line	mm(in)						
	Gas line	mm(in)						
Capacity connection		%						
Number of connectable indoor units								

1. The data are measured under the following conditions (ISO-T1). Cooling: Indoor temp. of 27°CDB, 19°CWB, and outdoor temp. of 35°CDB. Heating: Indoor temp. of 20°CDB, and outdoor temp. of 7°CDB, 6°CWB. Piping length is 7.5m.
 2. Sound pressure level indicates the value in an anechoic chamber. During operation these values are somewhat higher due to ambient conditions.
 3. [] : Pipe sizes applicable to European installations are shown in parentheses.