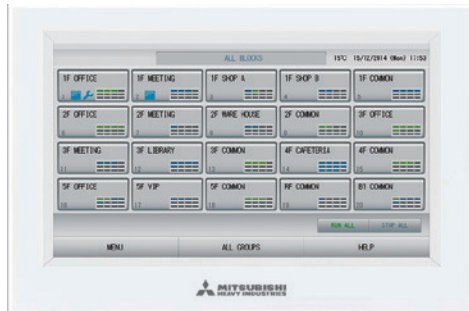




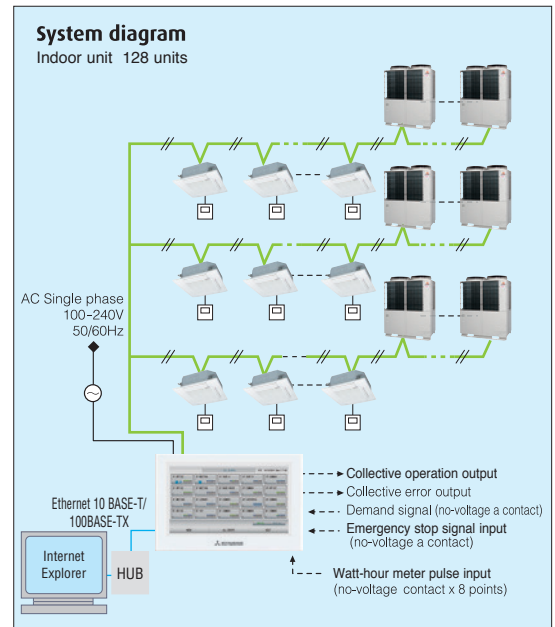
<Central Control> SC-SL4-AE/BE

Mitsubishi Heavy Industries Thermal Systems introduces the full colour touch screen central control SC-SL4-AE/BE, with 9 inch interactive LCD display. Offers control, monitoring, scheduling and service/maintenance functions for up to 128 indoor units. Control with PC is available by use of internet explorer.

Indoor units can be controlled, scheduled, monitored and either individually, as groups or as blocks of groups with the following functions:



Control	Monitoring	Scheduling	Administration/Service
Run/Stop / Home leave	Operating state	Yearly schedule	Block definition, Floor layout
Mode (cool/heat/fan/dry/Auto)	Mode	Today's schedule	Group definition
Set temperature	Set temperature	Detailed daily schedule	Unit definition
Operation permitted/prohibited	Room temperature	Season setting	Time and date setting
Fan speeds	Operation permitted/prohibited		Alarm history
Air direction	Fan speed		Energy consumption calculation period
Filter sign reset	Air direction		Energy consumption, cumulative operation time
Demand control (3 steps)	Filter sign		Flap control setting
Emergency stop	Maintenance (1, 2 or back-up) Outdoor air temperature		Operation data monitoring Data logging (Run / Stop set temperature , room temperature , outdoor air temperature)

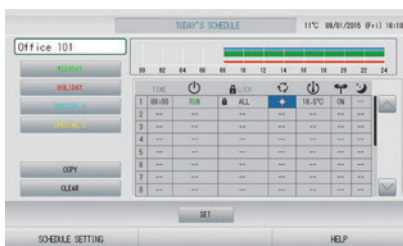


PC requirements: Windows Vista or Windows 7, 8.1, 10
Monitor resolution 1280 x 1024 or more.
Web browser requirements: Internet Explorer 11

Schedule setting

For each group

Schedule settings for each group are possible. The RUN/STOP/HOME LEAVE time, operation mode, remote control Lock/Unlock setting, temperature setting, energy setting, and silent mode can be set up to 16 times per day.



Yearly Schedule

Schedule settings for a year are also possible. The weekday, holiday, special day 1 or special day 2 can be selected and set.



Operation time history

Possible to check operation time history for cooling and heating separately.

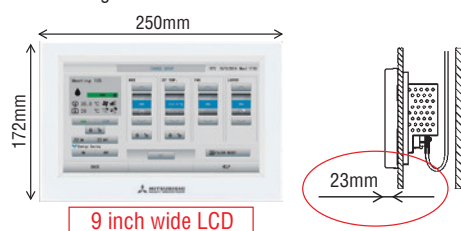


Alarm history

A maximum of 300 records is displayed for the history of error occurrence and restoration in the unit of air-conditioner. It is possible to output the history data to a CSV data file.

High visibility

Increasing in size from 7 to 9 inches

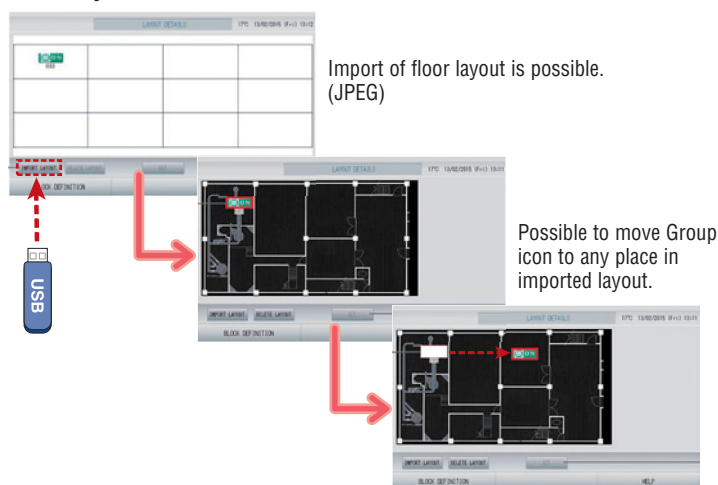


9 inch wide LCD

Contrast between five colours for icon display and black light base screen has achieved high visibility.

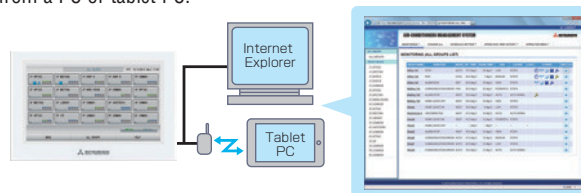
- Green : in operation
- Blue : stop
- Red : error
- Yellow : communication error
- Gray : no groups

Block layout function

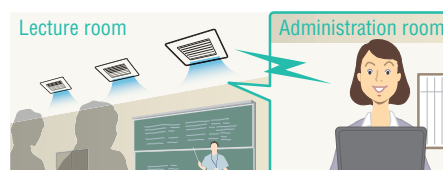


Web function

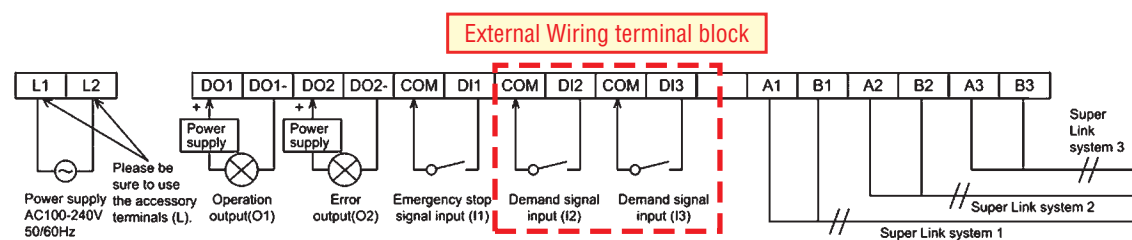
You can monitor and control up to 128 indoor units (Max.128 groups) from a PC or tablet PC.



<Example>
Monitoring and operating air-conditioners in a lecture room of a university



3 levels of demand control from 2 external inputs



Demand level	Control	Not objective		Center/Remote	Set temp.	Set to D1	Center/Remote	Set temp.	Set to D2	Center/Remote	Set temp.	Set to D3	Center/Remote
		Set temp.	Operation mode										
0	Normal	-	-	-	-	-	-	-	-	-	-	-	-
1	Temp. shift	-	-	-	Shift	-	Center	-	-	-	-	-	-
2	Fan (1stage)	-	-	-	-	Fan	Center	-	Fan	Center	-	-	-
3	Fan (2stage)	-	-	-	-	Fan	Center	-	Fan	Center	-	Fan	Center

Demand level 1 – Any indoor unit set to D1 (Demand level 1) has its temperature set point shifted by +2°C in cooling mode or -2°C in heating mode and cannot be operated from the local remote controller

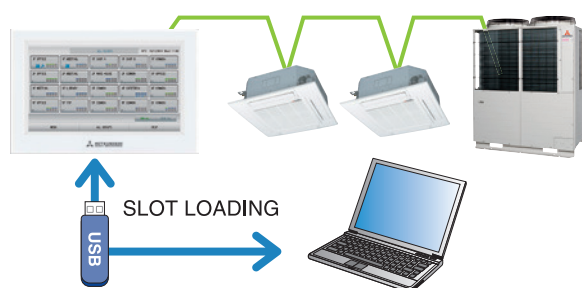
Demand level 2 – Any indoor unit set to D1 or D2 switch to fan only mode and cannot be operated from the local remote controller

Demand level 3 – Any indoor unit set to D1 or D2 or D3 switch to fan only mode and cannot be operated from the local remote controller

Electric power calculation function:

(for SC-SL4-BE only)

SC-SL4-BE gives electric power consumption data (kWh) for each indoor unit, each group, each SUPERLINK-II system, and each watt-hour meter input.



	SC-SL4-BE
Export data by	USB / LAN
Calculation software	Included
Watt-hour meter pulse input (Maximum)	8
Max connectable indoor units	128

Item	Model	SC-SL4-AE/SC-SL4-BE
Ambient temperature during use		0 ~ 40°C
Power supply		1 Phase 100-240V 50/60Hz
Power consumption		9W
External dimensions (Height x Width x Depth)		172mm x 250mm x 23 (+70) mm
Net weight		2.0kg
Number of connectable units (indoor units)		up to 128 units
LCD touch panel		
Colour LCD, 9 inches wide		
Inputs	SL (Superlink) signal inputs	1 system (Super link-II)
	Watt-hour meter pulse input*	8-point, pulse width 80ms or more
	Emergency stop signal input*	1 point, non-voltage a contact input continuous input (closed, forced stop)
	Demand signal input*	2 point, non-voltage a contact input continuous input (closed, demand control)
Outputs	Operation output	1 point, maximum rated current 40mA, DC24 V All units stop; Open, any unit operating; Close
	Error output	1 point maximum rated current 40mA, DC24 V Normal; closed. If even one unit is abnormal; Open (Open/closed can be changed)

* The receiving side power supply is DC 12V (10mA).
The air conditioning charges calculations of this unit are not based on OIML, the international standard.